



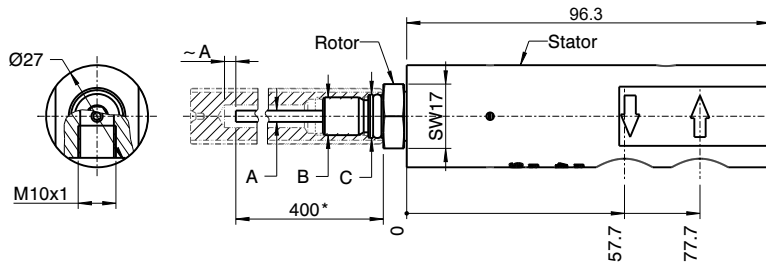
servomold[®]
ROTARY COOLING WITH
MECHANICAL SEAL

SDD
FOR ROTATING CORES

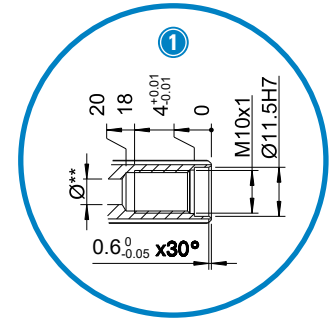
Adaptable cooling solution / Temperatures up to 90 °C – Pressure up to 4 bar
Cooling pipe Ø3, Ø4 and Ø6 mm / Different connection options available

Installation Example

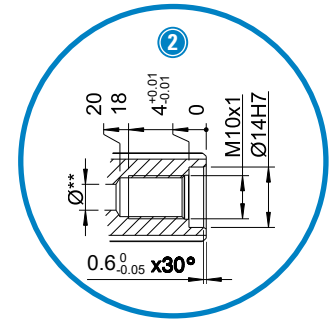
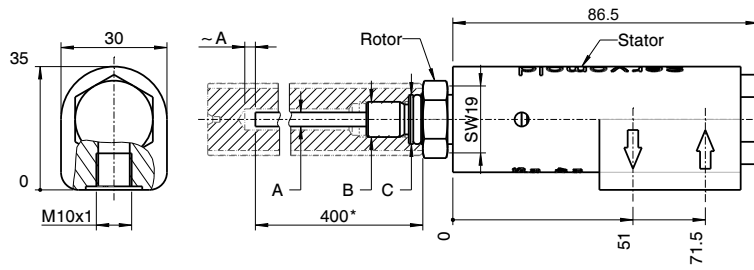
SDD-27



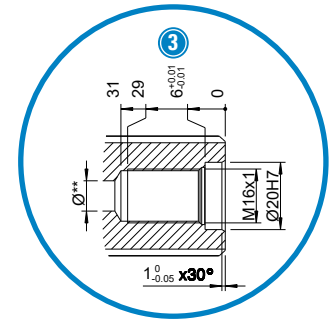
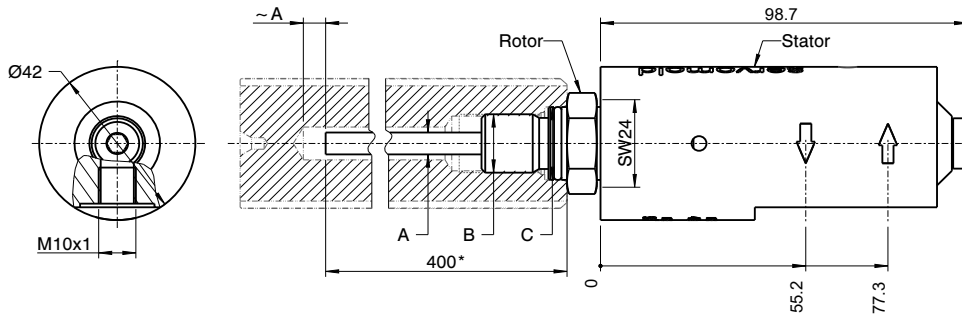
Connection details (thread core)



SDD-30



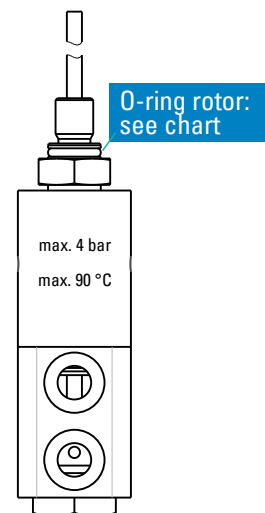
SDD-42



*Standard length

**Select diameter for optimum flow depending on cooling tube diameter.

		SDD-27	SDD-30	SDD-42
Connection detail	C	radial sealing Ø11.5 H7/g6	① radial sealing Ø14 H7/g6	② radial sealing Ø20 H7/g6
Standard pipe Ø (mm)	A	Ø3	Ø4	Ø6
Connecting thread rotor	B	M 10x1	M 10x1	M 16x1
O-ring Ø rotor	-	Ø8x2	Ø10.5x2	Ø16x2



Sample order no.: SDD-42 (system size)

Servomold Rotary Cooling



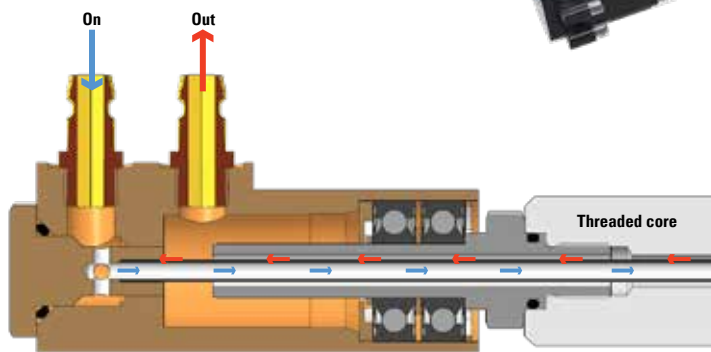
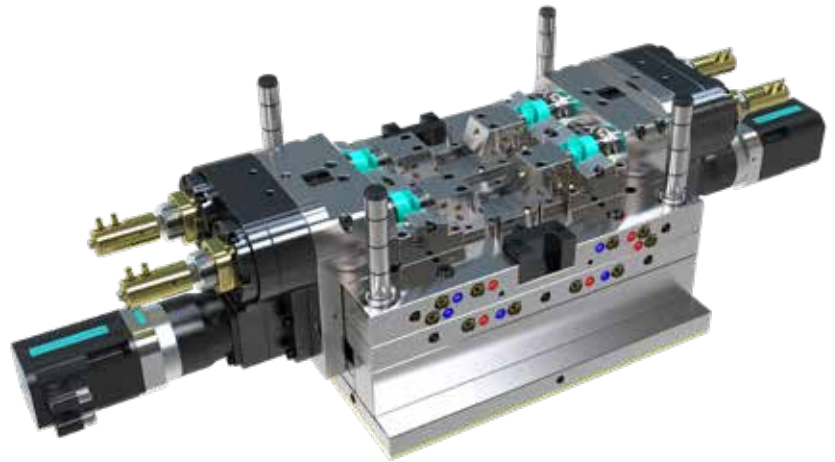
Connection details
(Thread with O-ring)



Environmental conditions	
Coolant	water
Coolant temperature	max. 90 °C
Pressure	max. 4 bar

- ⚠ Do not run dry!
- ⚠ Please make sure to use clean, filtrated water!
- ⚠ Check O-ring regularly!
- ⚠ Rotor tightening torque 10 Nm!
- ⚠ Use medium-strength threadlocker for rotor!

Installation Example



DME Company LLC

42827 Irwin Dr.
Harrison Twp., MI 48045
800-626-6653 toll-free tel
248-398-6000 tel
www.DME.net web
DME@DME.net e-mail

DME Canada

41 Todd Road
Georgetown, Ontario
Canada L7G 4R8
800-387-6600 toll-free tel
905-677-6370 tel
DME_Canada@DME.net e-mail

DME Mexico / South America

Circuito el Marques Notre, No.55
Parque Industrial El Marqués
El Marqués, Querétaro, CP 76246
52.442.713.5666 tel
DME_MX@DME.net e-mail

eSTORE
store.dme.net
Shop online 24/7.